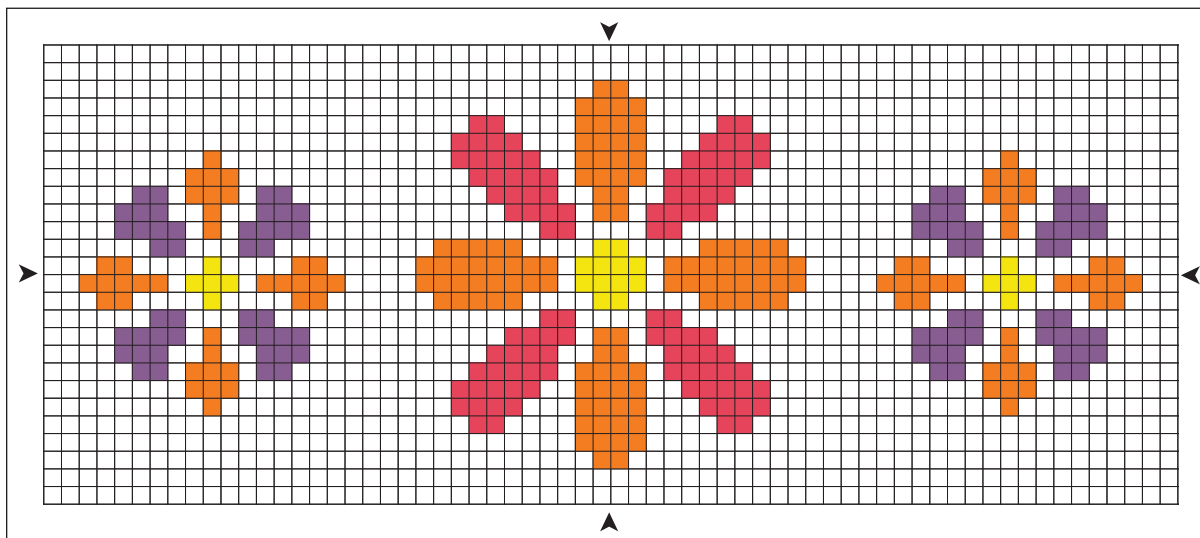


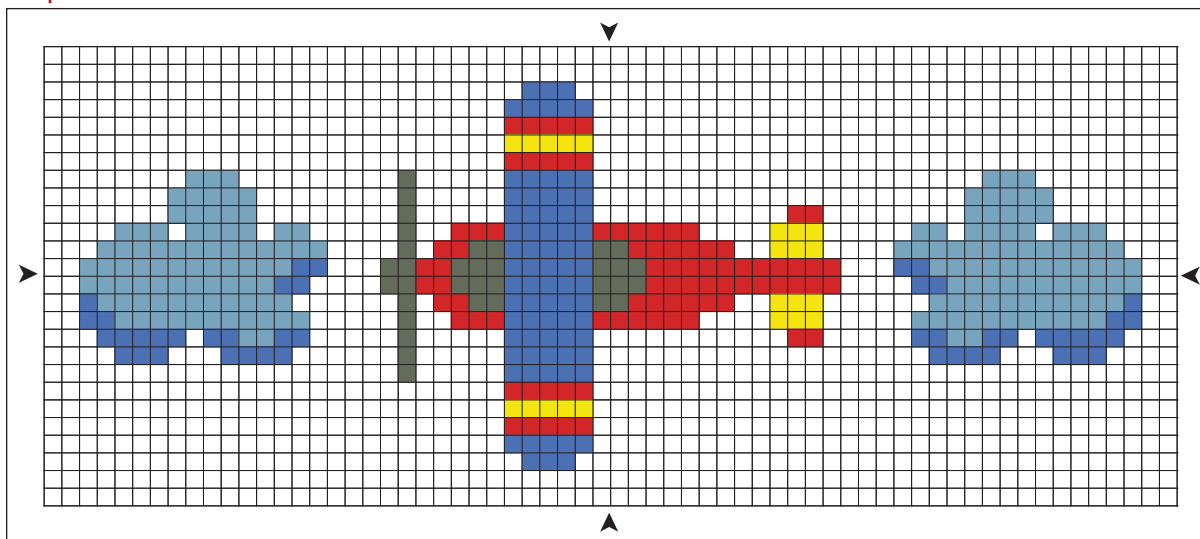
Easy Flowers or Airplane Design for Beginner Stitchers

Cross-Stitch & Needlework, March 2010

Flowers Stitch Count = 60w x 22h



Airplane Stitch Count = 60w x 22h



FLOWERS KEY

CROSS-STITCH

ANCHOR	DMC	COLOR
289	307	Lemon
099	552	Medium Violet
035	891	Dark Carnation
316	971	Pumpkin

AIRPLANE KEY

CROSS-STITCH

ANCHOR	DMC	COLOR
289	307	Lemon
273	535	Very Light Ash Gray
046	666	Bright Christmas Red
131	798	Dark Delft Blue
161	813	Light Blue

Fabric

One 12" x 8" (30.5cm x 20.3cm) piece of 10ct. White Aida cloth for each design

Design Size

10ct. = 6" x 2 1/4" (15.2cm x 5.7cm)

Instructions

Center the design on the fabric and begin stitching. Work cross-stitches with three strands of cotton embroidery floss.

Use a pressing cloth to carefully iron the needlework from the back before finishing as desired.